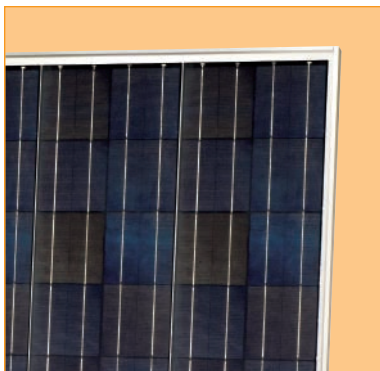
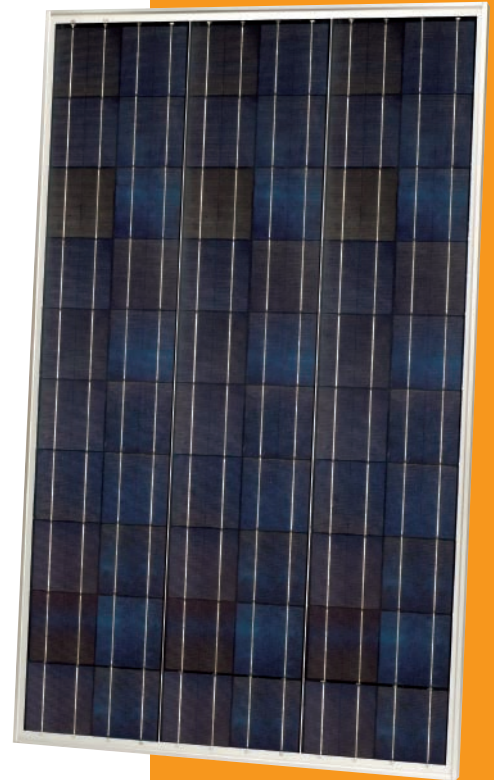


# 208 WATT

NEXT GENERATION. BREAKTHROUGH PERFORMANCE.

## POLY-CRYSTALLINE SILICON PHOTOVOLTAIC MODULE WITH 208W MAXIMUM POWER

This poly-crystalline 208 watt module features 12.8% module efficiency for an outstanding balance of size and weight to power and performance. Using breakthrough technology perfected by Sharp's 45 years of research and development, these modules use an advanced surface texturing process to increase light absorption and improve efficiency. Common applications include office buildings, cabins, solar power stations, solar villages, radio relay stations, beacons, traffic lights and security systems. Ideal for grid-connected systems and designed to withstand rigorous operating conditions, Sharp's ND-208U1 modules offer maximum power output per square foot of solar array.



*Solder-coated grid results in high fill factor performance under low light conditions.*



*Sharp multi-purpose modules offer industry-leading performance for a variety of applications.*

## FEATURES

- High-power module (208W) using 155mm square poly-crystalline silicon solar cells with 12.8% module conversion efficiency
- Sharp's advanced surface texturing process increases light absorption and efficiency while providing a more subdued, "natural" look
- Bypass diode minimizes the power drop caused by shade
- White tempered glass, EVA resin, and a weatherproof film, plus aluminum frame for extended outdoor use
- UL Listings: UL1703, cUL
- Sharp modules are manufactured in ISO 9001 certified facilities
- 25-year limited warranty on power output (see dealer for details)

Neva Multiew  
C. Urgell 25. 08011 - Barcelona  
T. +34 93 289 06 70  
<http://www.gruponeva.es>

### ELECTRICAL CHARACTERISTICS

Cell	Poly-crystalline silicon
No. of Cells and Connections	60 in series
Open Circuit Voltage (Voc)*	36.1V
Maximum Power Voltage (Vpm)*	28.5V
Short Circuit Current (Isc)	8.13A
Maximum Power Current (Ipm)	7.3A
Maximum Power (Pmax)*	208W (+10% / -5%)
Module Efficiency Maximum Power ( $\eta_m$ )	12.8%
Maximum System Voltage	600VDC
Series Fuse Rating	15A
Type of Output Terminal	Cable with MC Connector

\* (STC) Standard Test Conditions: 25°C, 1 kW/m<sup>2</sup>, AM 1.5

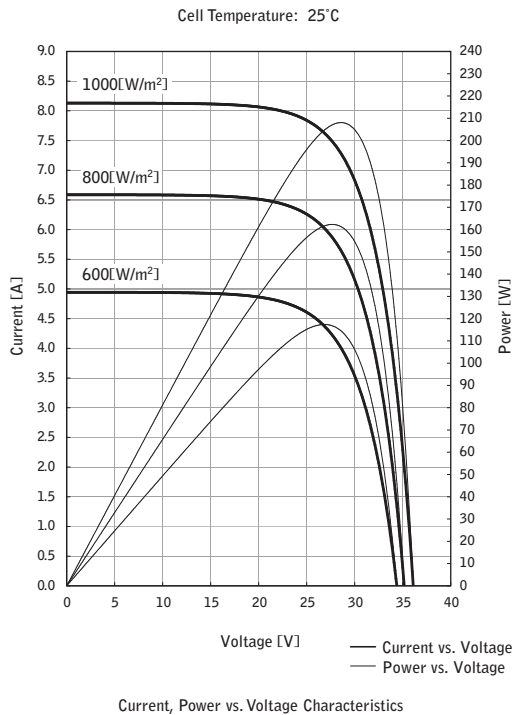
### MECHANICAL CHARACTERISTICS

Dimensions (L x W x D)	64.6" x 39.1" x 1.8" / 1640mm x 994mm x 46mm
Weight (lbs/kg)	46.3lbs / 21kg
Size of Carton	68.3" x 43.2" x 4.5" / 1735mm x 1097mm x 114mm
Carton Quantity	2 pcs per carton
Pallet Quantity	28 pcs per pallet
Loading Capacity (48 ft container)	448 pcs (16 pallets)
Loading Capacity (53 ft container)	476 pcs (17 pallets)

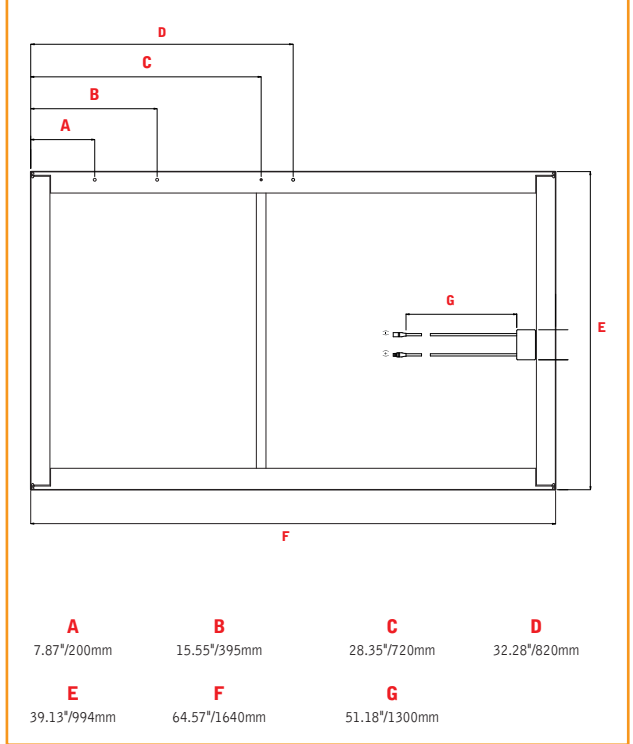
### ABSOLUTE MAXIMUM RATINGS

Operating Temperature (min to max, °F/°C)	-40 to +194°F / -40 to +90°C
Storage Temperature (min to max, °F/°C)	-40 to +194°F / -40 to +90°C

### IV CURVES



### DIMENSIONS



Specifications and design are subject to change without notice.

In the absence of confirmation by product manuals, Sharp takes no responsibility for any defects that may occur in equipment using any Sharp devices. Contact Sharp to obtain the latest product manuals before using any Sharp device.

